

MONTHLY MEMBERSHIP PROGRESS REPORT

LOCATION NEW YORK

District 20 E1

Results as of: 3/31/2023

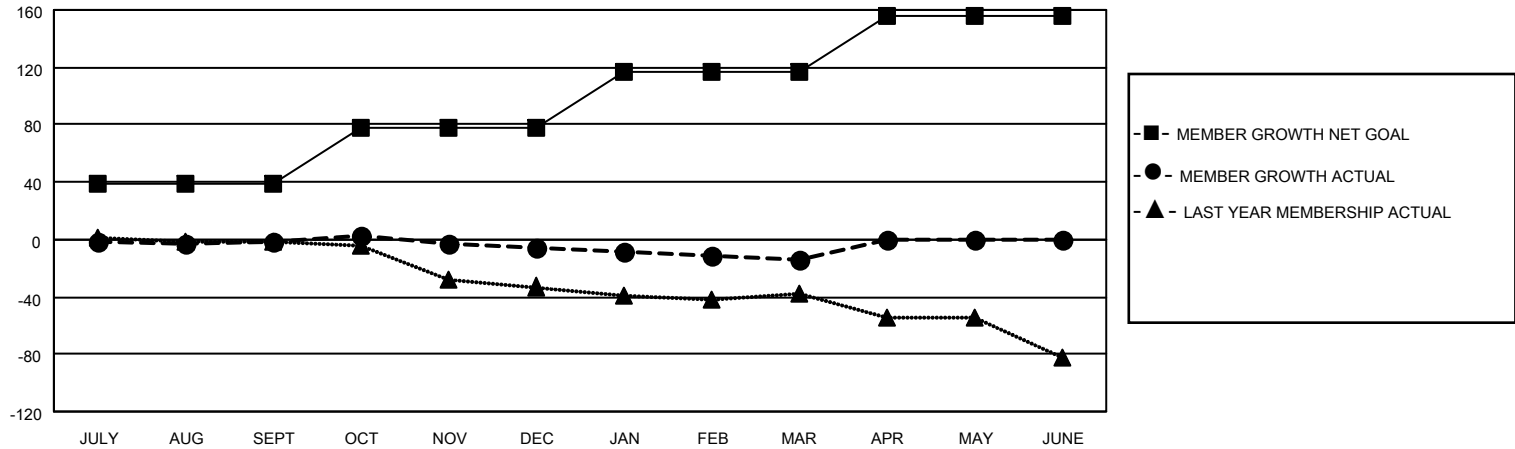
Clubs			
RESULTS FOR 2022-2023			
QUARTER	NEW CLUB GOAL	NEW CLUBS	DROPPED CLUBS
JULY/AUG/SEPT	0	0	0
OCT/NOV/DEC	1	0	0
JAN/FEB/MAR	0	0	0
APR/MAY/JUNE	1	0	0

Members			
RESULTS FOR 2022-2023			
QUARTER	MEMBER GROWTH NET GOAL	MEMBER GROWTH ACTUAL	DROPPED MEMBERS ACTUAL (including transfers)
JULY/AUG/SEPT	39	17	13
OCT/NOV/DEC	39	16	18
JAN/FEB/MAR	39	21	27
APR/MAY/JUNE	39	0	0

GOALS AND ACTUAL NEW CLUBS CUMULATIVE



GOALS AND ACTUAL MEMBERS CUMULATIVE



DROPPED CLUBS: 0

21 CLUBS OF 37 ADDED 1 OR MORE NEW MEMBERS

GENDER DISTRIBUTION

MALE	858 (69.76%)
FEMALE	371 (30.16%)
NON BINARY	0 (0.00%)
PREFER NOT TO ANSWER	1 (0.08%)

DROPPED MEMBERS

[CLICK HERE FOR CUMULATIVE MEMBERSHIP DATA](#)

DECEASED	12
CLUB CANCELLED	0
OTHER	46
TOTAL	58

TOTAL FAMILY UNIT MEMBERS 198

FAMILY MEMBERS PAYING HALF DUES 100